

Lyon Training





Why Lyon Training?

Lyon Work & Rescue Training

Our Work & Rescue training department offers a wide range of courses for individuals and industries working at height, in confined spaces and in rescue situations.

With over 20 years of training experience, we boast an unrivalled facility and a team of highly qualified and experienced trainers to match. As with any business, our success is measured by our client commitment with many returning for additional training, refresher courses, first class support and equipment sales. Their testimonials speak for themselves.

Details of our courses, including Work at Height, IRATA and PPE Inspection, can be found on the following pages – please contact our training department to discuss your requirements before making your booking.

“The course was very well put together – most enjoyable and informative”

Garry Jones - MOD

“The course was well structured and well balanced. The facilities are also top class and the staff are very professional”

Paul Fessi – Engineering Manager, Hanson Thermalite

“...The feedback from our managers has been very positive and they all thoroughly enjoyed the day. It makes such a difference when you have a professional trainer with such knowledge and experience of PPE as well as a friendly and open teaching style.”

William Galbraith – Operations Director, Go Ape

“We came away feeling that we had gained knowledge and information to assist us with our future sales of PPE. Our company will definitely be sending more of our sales team to attend this invaluable training course.”

Adam Beaumont - AC Lighting Ltd.

Product Training

Petzl recommend, as do most manufacturers, that users of their equipment seek qualified instruction before use.

As the Petzl distributor for the UK and Ireland, Petzl's Technical Director confirms “*Lyon Equipment is authorised and qualified to train in the appropriate application, use, care, inspection and maintenance of Petzl equipment at all levels. Lyon Equipment is also authorised on behalf of Petzl to undertake the assessment of individuals and companies it has so trained.*”

This is more than just a certificate on the wall – Lyon Equipment have worked closely with Petzl for over 30 years to help develop equipment, techniques and training for an industry-wide range of uses.



Our Facilities

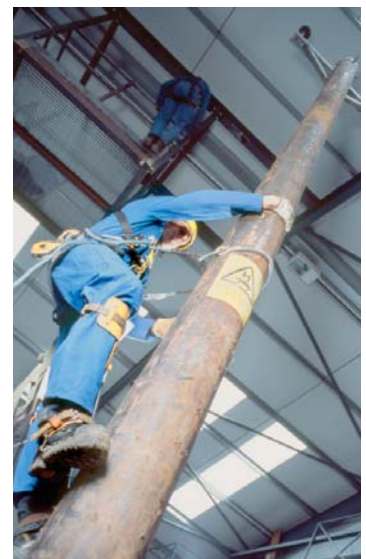
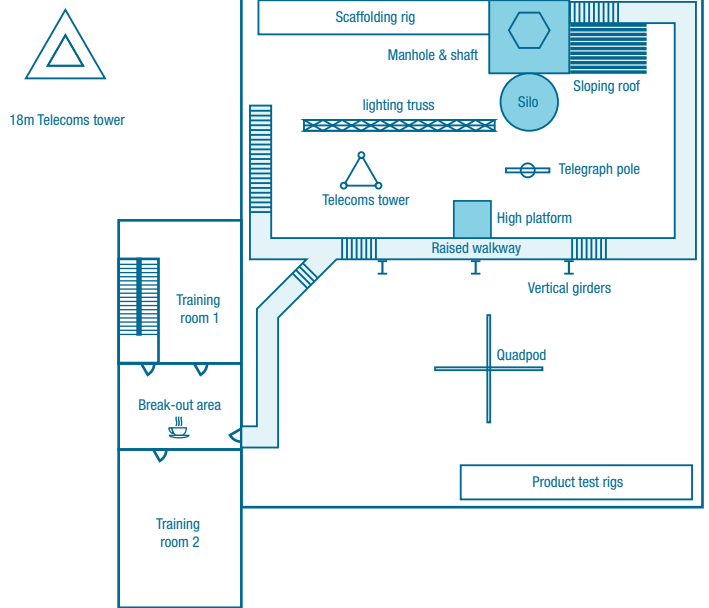
Our purpose built 3,000 square foot training facility at Tebay, Cumbria is directly accessible from the M6, Junction 38 and includes;

- Heated indoor training area;
- suspended platforms
 - restricted access tower
 - bulk-storage silo
 - sloping roof
 - 18 metre telecom mast
 - lighting truss

- Fully equipped modern lecture rooms;
- interactive white board
 - product test rigs

Candidates also have the use of changing rooms, showers, a comfortable refreshment / break-out area and on-site parking.

We can also provide site specific training at your premises – please contact us for further information and a quote.





Our Practical Courses ...



Work at Height

This training course is designed to provide you with the skills to enable safe and efficient work at height using full body harnesses, energy absorbing lanyards and work positioning lanyards. We will provide you with a broad understanding of the uses and limitations of the equipment, fall arrest and work positioning techniques, legislation and types of protection.

Code: LT10
Duration: 1 day



Work at Height Rescue

It is a requirement of current legislation to allow for a rescue plan to be put into place for those who work at height. This course will provide experienced workers with the skills to undertake rescues from height using the 'Lyon Pick Off Rescue Kit'. The course covers legislation, the rescue kit and its component parts, sequence of events for rescue, using the rescue kit and rescue and suspension trauma considerations.

Code: LT12
Duration: 2 days



Harness & Lanyard

Candidates will be shown the correct fitting and adjustment of a range of full body harnesses, the use of energy absorbing lanyards and a selection of fall protection systems. The implications of using fall protection techniques, consideration of anchor points and fall distances as well as the care and inspection of equipment are covered.

Code: LT13
Duration: 1 day

Evacuation From Height

This course is specific to the development of escape and rescue plans to increase safety levels and address risks identified in assessments. We offer an 'Instructor' course for personnel wishing to pass on training to the users of the equipment, and a 'User' only course. This course is ideal for users of cranes, order pickers and other plant operators.

Code: LT15
Duration: 1 day

Anchor Placement

We show how to correctly install, test and certify mechanical or chemically fixed anchors in accordance with BS7883. There are thorough practical sessions installing and testing various anchors with discussion on placement positions and the types of structure that may be encountered.

Code: LT16
Duration: 1 day

Mast & Tower Climbing

Mast and tower climbers using fall arrest and work positioning techniques must be able to use the equipment in a safe manner and be aware of its limitations. We offer this course to provide industrial climbers with the detailed information they need to use a harness and lanyards safely, as well as training in rescue techniques.

Code: LT17
Duration: 3 days

Leaning Ladder & Step Ladder

This course is for personnel who are required to specify and/or use leaning ladders or step ladders at work. We will inform you of your legal requirements, correct choice of equipment, risk assessments, quality assurance, equipment inspection and appropriate methods of use and limitations of equipment.

Code: LT18

Duration: 1 day (10am – 2:30pm)

First Aid at Height

This course aims to train those who may be involved in dealing with incidents and injuries, in difficult or remote locations, to be able to give appropriate aid to casualties requiring lengthy extraction or transferrals to definitive care. Training includes the diagnosis and recording of injuries and the application and use of practical devices and treatments.

Code: LT19

Duration: 5 days

All successful candidates attending our courses will receive a certificate of training and assessment.

We recommend that all candidates carry out further training within 3 years.

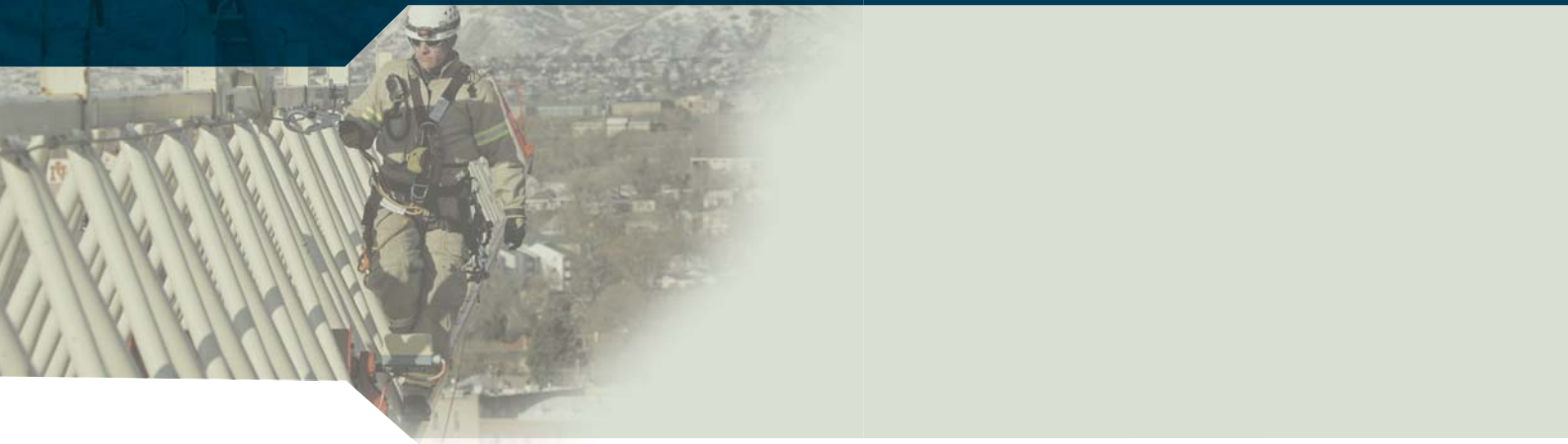
Bespoke Courses

As well as the full range of scheduled courses Lyon Equipment Ltd can also offer tailor made training to suit your specific work at height, client specified equipment and rescue needs.

This bespoke training can be run on-site where appropriate, or at our specialist training facility in Cumbria.

“This was an excellent course, I have learnt lots and feel I have gained sufficient knowledge to start evaluating our existing processes with a view to improving them. The follow on 2 day course will build upon today. I enjoyed the practical session even though I do not like heights. I am looking to send our Engineers on this course as they will benefit greatly from it.”

Jim Lilley, 1 day Work at Height delegate



Our IRATA Courses ...

Industrial Rope Access Trade Association (IRATA)

The Industrial Rope Access Trade Association (IRATA) has developed a formal training scheme and grading structure where workers are grouped into three grades depending on their experience and level of assessment. Lyon Work & Rescue provides training at all three levels of the scheme as well as Re-assessment and Direct Entry courses.



IRATA Level 1

A technician who is able to perform a limited range of rope access tasks under the supervision of a Level 3 supervisor. The training and assessment covers legislation, strengths and limitations of equipment, anchors, inspection, documentation and maintenance of equipment and a range of rope manoeuvres including simple rescue techniques.

Code: LT01

IRATA Level 2

A lead technician who is capable of rigging working ropes, undertaking rescues and performing other tasks under the supervision of a Level 3 supervisor. The training and assessment covers the range of tasks undertaken by a Level 1, plus rigging and use of associated equipment, more complex rescues, legislation and care, maintenance, inspection and documentation of equipment.

Code: LT02

IRATA Level 3

A technician who is capable of complete responsibility for work projects, is able to demonstrate the skills and knowledge required of Levels 1 and 2 and is capable and competent to supervise other IRATA technicians. The training and assessment covers all the skills and knowledge required of Level 1 and 2 technicians, plus complex pulley systems, advanced rescue and rigging techniques, equipment inspection, examination and safe working in accordance with LOLER.

Code: LT03

Duration: All levels - 5 days (4 days training plus 1 day assessment)

Certification

Upon successful completion candidates will receive an internationally recognised certificate of competence in rope access, log book and an IRATA ID card.

Validation - All levels - 3 years

IRATA Re-assessments & Direct Entry - Please contact us for details.

“Excellent facilities in both the rig and classroom”

Iain McKenzie - The Tower Climbing Centre, IRATA Level 1





Our Classroom Based Courses ...

PPE Inspection

All work at height equipment requires inspection prior to, during and after use. All personnel who work at height must be able to undertake their own pre-use checks. This course covers legislation, equipment selection and hands on inspection in order to fulfil this requirement.

Code: LT08

Duration: 1 day

PPE Inspection – Competent Person Certificate

This course teaches candidates how to systematically manage work at height equipment throughout its lifetime. We cover legislation, management systems, selection of equipment, equipment inspection and the opportunity to view destructive tests on some Personal Fall Protection Equipment in our facility. An independent party externally verifies the assessment, successful candidates only receive their certificate after this verification.

Code: LT09

Duration: 4 days

All successful candidates attending our courses will receive a certificate of training and assessment.

We recommend that all candidates carry out further training within 3 years.

Work at Height Regulations

The Work at Height Regulations came into force on 6th April 2005 and had a major impact on all sectors of industry. How do they affect you? How should the Regulations be applied to your business? Using case studies we will guide you through the legislation to enable you to manage work at height in your business. The course covers the reasons and effects of the change in legislation, who the regulations apply to, study and interpretation of the Work at Height Regulations and some examples of its application.

Code: LT14

Duration: 1 day

Working at Height with Fall Arrest Equipment - A course for safety managers

A flexible syllabus designed to provide safety officers and site managers with core knowledge on the selection, use, limitations and care of fall arrest equipment. Topics covered include information regarding work from mobile elevated work platforms, dynamic drop and static load test demonstrations, updates on current and forthcoming regulations. This course also includes an optional practical climbing session. On completion of the course a certificate of Continued Professional Development will be issued to each candidate.

Code: LT30

Duration: 2 days



“Excellent course. Well presented by professional and informed staff.”

*G Forrest - GTC Group,
4 day PPE Inspection*



Lyon Work & Rescue specialise in providing training and equipment to professionals working at height, in confined spaces and specialist fields such as;

- Construction
- Fire & Rescue
- Arboriculture
- Military
- Coast Guard
- Off-shore Industry
- Search & Rescue
- Theatre
- Nuclear power

Our services include;

- Equipment supply
- Training
- Equipment manufacture
- Testing & certification
- Consultation

We actively participate in the development and promotion of safe working practices and equipment, liaising closely with manufacturers, regulating authorities and end users.



Petzl Product Training



Lyon Equipment Limited

Junction 38, M6, Tebay, Cumbria, CA10 3SS, UK
Tel +44(0)15396 26250, Fax +44(0)15396 24857
Email training@lyon.co.uk
www.lyon.co.uk

February 2008 - This document is printed on recycled paper.

